

No. 131 - February / March 2025



THE POUNDSTOCK PACKET



KERNOW BYS VYKEN!



Photo credit to
Harry W Photos

Distributed free to every household in Poundstock parish
£1.00 to non residents Produced every two months

Contact us at poundstockpacket@gmail.com

langleaves

Tree Surgery & Consultancy



All aspects of tree care & management.

- ✓ Hedge Cutting & Stump Grinding
- ✓ Arboricultural Consultancy & Surveys
- ✓ Traffic Management
- ✓ Forestry Services
- ✓ Mobile Saw Milling
- ✓ Planting Plans & Planting
- ✓ Suppliers of Logs & Kindling



0800 233 537
www.langleaves.com
info@langleaves.co.uk



Notes From The Editors

Christmas is a distant memory and we are looking forward to Spring. Have you spotted any snowdrops or early daffodils yet?

Reading the news or watching TV it's easy to feel that there are lots of bad people in this world. In contrast, I'm regularly astounded by the willingness of our local community to step in and help others when they need it. A big shout out to Daniel Terry of Based Plumbing and Heating who heard that the Widemouth Toilets had been vandalised by a large rock being thrown into one of the toilets. The very next day Daniel replaced said toilet free of charge. Also a shout out to the manager of Plumbase in Bude who heavily discounted the parts when he heard the story. A great example of community spirit!

If you'd like to help your community, please go to page 31 - we need you!

Best wishes, Jayne & Tania poundstockpacket@gmail.com

Contributions

We always welcome input from our readers. If you want to send us an article, photographs or local information, contact us at poundstockpacket@gmail.com.

The deadline for our next edition is 15th March 2025.

We do not necessarily endorse the views expressed by individual contributors and while we do our best to make sure all information is accurate, we can't accept any responsibility for errors. We reserve the right to edit items submitted and decide on what is suitable for publication. If you wish to copy or reuse any of our content, please contact the editor or article.

Advertising and Distribution

Advertising in the Packet currently costs from £35 a year (six issues) depending on the size of ad you choose. This includes delivery direct to all the homes in the parish – currently over 550. For more information please contact Julie Pawley via advertpoundstockpacket@gmail.com We do our best to deliver to everyone in the parish, but if you know of anyone who has been missed please let us know. For those who live elsewhere, copies are available at the Beach House and Wainhouse Country Stores, on our website (poundstockpacket.org.uk) or by post; please contact us for details.

Printed by Parish Magazine Printing

Email: Philip.tucker@homecall.co.uk; tel: 01288 341617

Contact us at poundstockpacket@gmail.com

Free
Local
Delivery

CAMPINGGAZ

FLO GAS



A+E
FUEL SUPPLIES

Bottled Gas + Logs

Your Local Supplier
for over 30 years



Call Us: 01288 356026  



ARTHUR W. BRYANT
FUNERAL SERVICE

BUDE
T/ 01288 352282

CAMELFORD
T/ 01840 214891

HOLSWORTHY
T/ 01409 253000

INDEPENDENT FAMILY
FUNERAL SERVICE

OUR FAMILY CARING FOR YOUR
FAMILY FOR OVER 50 YEARS

MEMORIAL
MASONRY

PRE PAYMENT FUNERAL
PLANS

W/ AWBRYANT.CO.UK
E/ CARING@AWBRYANT.CO.UK



Pop up pub at the Gil dhouse

On a cold and dark December evening, the Gildhouse was transformed into a Pop-Up Pub. The bar was managed by Sam and Becky, the prices were very fair with a good selection of wines, beers and soft drinks. Complimentary mince pies were handed round to add to the festive flavour.

We were treated to a lively and fun performance by Bude Metric Brass Band. All the favourite carols were played, with the audience enthusiastically joining in. One carol caught me off guard – “While Shepherds Watch..” sung to the tune of Lingham rather than the more traditional tune. This is a typical Cornish rendition which is very haunting and beautiful (there is a wonderful version by Fishermans Friends on YouTube).

Colin Gay is Bude Metric’s Conductor and musical director, and he explained that the band had 24 appearances during December, so they were no doubt ready for a quiet and restful Christmas Day!



Written by Jayne Griffiths

Please vote for The Castle, Bude

A shepherd's lantern, that once belonged to Reverend Stephen Hawker, has been shortlisted for the Cornwall Heritage Award's Object of the year.

The award's theme this year is celebrating Cornwall's creativity. Hawker is undoubtedly one of the most creative Cornishmen of all time, having written many stories and poems, as well as the great Cornish anthem of Trelawney.

The winner is decided by public vote, which is open until 10 February. You can vote on multiple devices by going to the link below.

The result will be announced at a ceremony in March.

Please vote for Hawker's lantern which is on display at The Castle, Bude. See it on Facebook and please share with your contacts.

<https://letstalk.cornwall.gov.uk/embeds/projects/21587/survey-tools/42467>



CHURCHES AND SERVICES FOR FEBRUARY & MARCH 2025

Church Timetable

February				March			
1 Sunday	9.30 10.00 18.00	HC All EP	BH WSM M	2 Sunday	09.30 10.00 18.00	HC All EP	BH WSM M
5 Wed'day	08.30 10.00	MP HC	ZOOM WB	5 Ash Wed'day	08.30 10.00	MP HC	ZOOM BH
9 Sunday	9.30 9.30 11.15 18.00	HC MP HC EP	M P W WSM	9 Sunday	09.30 09.30 11.15 18.00	HC MP HC EP	M P W WSM
12 Wed'day	08.30 10.00	MP HC	ZOOM BH	12 Wed'day	08.30 10.00	MP HC	ZOOM BH
16 Sunday	09.30 09.30 11.15	HC MP HC	BH M WSM	16 Sunday	09.30 09.30 11.15	HC MP HC	BH M WSM
19 Wed'day	08.30 10.00	MP HC	ZOOM WB	19 Wed'day	08.30 10.00	MP HC	ZOOM WB
23 Sunday	09.30 09.30 09.30 10.00 11.15	HC HC MP MP HC	M P W WSM BH	23 Sunday	09.30 09.30 09.30 10.00 11.15	HC HC HC MP HC	M P W WSM BH
26 Wed'day	08.30 10.00	MP HC	Zoom BH	26 Wed'day	08.30 10.00	MP HC	ZOOM W
March times are estimated; check your church times in "Voices Together"				30 Sunday Mothers Day	Benefice to be Arranged Day		

Bude Haven	BH	Everyone is invited to coffee at the Gildhouse after Poundstock Services .	
Marhamchurch	M		
Poundstock	P	Central Methodist Church	10.30
Week St Mary	WSM	Marhamchurch Chapel	10.30
Whitstone	W	Week St Mary Chapel	11.00
Widemouth Bay	WB	Coast Family Church non-denominational - Jacobstow Hall - 1 st , 3 rd & 5 th Sunday	

From the Rectory

The Boat Trip

A man was sailing in his yacht. He had been out on the ocean for a number of days, when unexpectedly his boat began to sink. He only managed to survive by clinging to a floating object. He was blown and buffeted by strong winds, and eventually he landed on a deserted island where no people or animals lived, just a few insects.

He managed to build a small box made of straw. He stayed there for several days eating fruit and fishing. He began to get used to his new life of suffering and loneliness. Eventually he lost all hope of ever being rescued and seeing his family again. Every night he lit a fire in front of his house to warm himself.

One evening as usual he lit the fire. He stayed there for a long time until he dozed off. Late in the night he was awakened by an overwhelming heat. His straw hut had caught fire. In his anger he cried out accusing and blaming God, shouting, "Oh God what have I done to you to hurt me so, you separated me from my family to bring me to this deserted island and now you let my hut burn. Why are you so hard on me it is better to die because I am tired of living in this suffering."

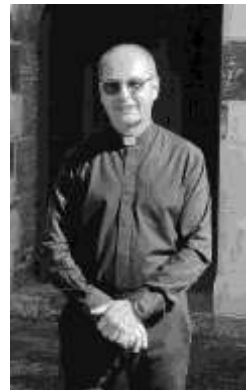
At dawn, he saw a small boat coming towards him. When the boat landed, he ran straight for the captain and said to him in astonishment, "Captain how did you get here? No boat can get here unless he gets lost."

"The captain replied in the night we saw fire and we thought it was a burning boat. We thought that you used the fire in order for us to find you."

The man cried fell on his knees and asked God for forgiveness. He got into the boat and went home and was reunited with his family.

Have you, like the man in the story, ever cursed God when life hasn't gone the way you hoped it would, or thought it should?

The Bible says, Many are the plans of a person's heart but it is the Lord's purposes that prevail. Proverbs chapter 3 verses 5 to 6.



Written by Reverend David Saunders

R & N FUELS

(Nicholls Bros)

COAL MERCHANTS

DON'T BE LEFT IN THE
COLD!

LOCAL DELIVERIES, ALL
SOLID FUELS

COMPETITIVE PRICES

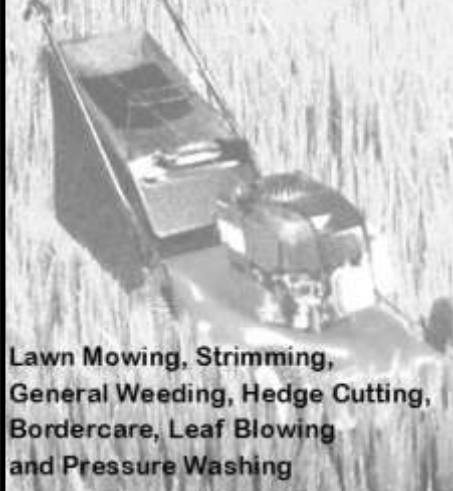
01840 230111 (Colin)

TD GARDEN SERVICES

Tom Willoughby

07757024820

td.gardenservice@outlook.com



Lawn Mowing, Strimming,
General Weeding, Hedge Cutting,
Bordercare, Leaf Blowing
and Pressure Washing

WAINHOUSE COUNTRY STORE POST OFFICE

(The Post Office also has Banking
Services, including Foreign Currency Facilities)
Euros available over the counter at the Post Office

& OFF-LICENCE

ST GENNYS 230 554

Local cheese and cream, bacon,
frozen foods, fruit and vegetables

Barnecutts pasties freshly baked

Newspapers & Magazines

National Lottery

We are now agents for dry cleaning

OPEN

Monday to Saturday 7 am-7 pm

Sunday 7 am-6 pm

With friendly and helpful staff



A spiritual haven on the Cornish
Coast



Bibles - Books



Cards - Gifts

*Join us for a cuppa and a chat
10-4 Mon to Fri -- 10-12.30 Sat*

4, Lansdowne
Mews, Bude.
EX23 8BH
t. 01288 356886



Email: arkangelbude@gmail.com

Reg. Charity. 294313

From The Sheepish Farmer

Great Britain has 34 native breeds of cattle of which 14 are at risk of being lost. One of these, are the Chillingham cattle. Once they were held sacred and pre-Christian pagans sacrificed them to their gods. Later, this herd both defended and fed the people of Chillingham castle in Northumbria.

The wild herd has had little intervention from man. The bulls fight to establish a hierarchy for the right to mate. Females are fiercely protective of their calves. They are white and usually have black around their nose, eyes, ears and hooves and they have impressive horns.

It is thought that the herd was enclosed in Chillingham Park in the 13th century. The herd has always been small and to safeguard the breed against future disaster a reserve herd has been set up at a secret location in Scotland. The Chillingham Wild Cattle are used to graze the Chillingham Park, without their grazing, the parkland would revert to woodland.



The cattle have very impressive horns. In managed breeds, only selected males are kept for breeding. However because the Chillingham cattle are left to be wild, there are a large number of bulls and they have to compete to get to mate with the females. Their large horns are used as weapons.

Closer to home, you're likely to see Red or North Devon Cattle. Thought to be a combination of the Longifrons and the Urus, with stories of international cattle trade not only going back to the early 1800s (with France), but also to the Phoenicians who came to the West country for tin in the Bronze Age – bringing cattle with them as currency.

The breed became known as the Devon in the 1700s, and was classed as a dual purpose breed then although they are an established beef breed today. Historically, versatility is even more deeply embedded in the Devon's genes: in the 18th and 19th centuries the breed was also valued as a plough ox – working for 5 or 6 years before fattening out. Such oxen were also prized for their swiftness in harness: unladen wagons returning to fields in catchy weather would often travel at 6 mph – a speed unrivalled by other breeds. The breed fell out of favour due to supermarkets demanding more 'efficient' bigger, continental breeds.

This century has seen the Devon's place reinstated in agriculture, from the growing demand for premium beef increasing market share and as a native breed for stewardship schemes and reducing carbon footprint on farms. So, if you can, please buy locally produced, native breed beef.

CBL STOVES

The Showroom, Unit 5
Red Post, Bude, Cornwall
EX23 9NW

01288 381852
carl@cblstoves.co.uk
www.cblstoves.co.uk



- Stainless Steel twinwall flues
- Chimney Lining
- Iskoern Pumice lining
- Fireplace alterations
- Stove Installations
- Wood, Multifuel, Gas & Electric Traditional & Contemporary Stoves & Fires
- Chimney Rebuilds
- Slate, Granite & Glass Hearths
- Wood & Ceramic beams & surrounds
- Floating Shelves



*Hand made items
For sale at our workshop and on line*

*Classes in Throwing and
pottery painting
Book on our website or phone*


PARSONS
POTTERY

News!

We have moved into our new Studio at Quinceborough Farm.

We will be offering new courses and special events—visit our web site for information.

First event:

Open Studio—
4th Oct 4-9pm &
5th Oct 10am-4 pm

The Old Garage
Quinceborough Farm,
Leverlake Road, Widemouth Bay
Cornwall EX23 0NA

Phone or text: 07967044298

Email: jar@parsonspottery.co.uk

www.parsonspottery.co.uk



Parsons Pottery



[parsons_pottery](https://www.instagram.com/parsons_pottery)



Saffron Buns Recipe

If you fancy cooking up a storm why not try these saffron buns?

Ingredients

1 teaspoon saffron
2 tablespoons boiling water
 $\frac{3}{4}$ cup milk
 $\frac{1}{3}$ cup sugar
 $\frac{1}{4}$ lb/115g butter
 $\frac{1}{2}$ cup warm water
1 oz/25g fresh yeast
1 beaten egg
4 cups strong white flour
1 teaspoon salt
 $\frac{1}{2}$ cup currants



Method

Add boiling water to saffron, let stand (overnight if possible)

Bring milk, sugar and butter to boil and cool to lukewarm.

In a bowl add $\frac{1}{2}$ cup warm water, the milk mixture, the beaten egg, the saffron in water and the salt. Crumble in the yeast and add about half of the flour. Beat until smooth.

Stir in the currants. Then slowly add sufficient flour to make a stiff dough. Knead well. Put in a bowl, mark a cross on top, cover with clean tea towel and leave to double in size.

Shape into 16-20 buns. Cover and leave for 30-45 minutes.

Bake at 200 degrees for 15 minutes.

When cooled, the buns can be brushed with a mixture of milk, water and 1 tablespoon of water, boiled for 3-4 minutes.

This recipe was donated by Pat Rowland. She writes that the recipe dates from 1915 when the buns were used as tea treats at Methodist Sunday School outings. According to Pat's son they are pretty good, but "not as good as Auntie Eileen's" – Eileen Nancekivell of Kilkhampton...but they come a very close second!.

Proposed Parish Hall comments

In the December edition we invited comments about the proposed Parish Hall. We received just three comments that we have published in full below together with the name of the author.

We wish to reiterate that these are not the views of the Packet Editors and we remain impartial.

Dear Editor

Your 'No Hall' vote will not jeopardize the 500K currently held in parish council funds. This year the parish council sent a PRECEPT demand to Cornwall Council requiring them to collect 35K from Poundstock residents. Cornwall Council duly collected an extra 35K from you, as part of your council tax bill, and then gave it to the Parish Council. Unused precept remains in the parish and accumulates. Now we have 500K and it will stay in the parish. The 500K can be used for other needier projects or returned to parishioners through a reduction of the annual Parish Council Precept."

Brenda Alison December 2024

Dear Editor,

This is my comment on the new hall.

I just wanted to know more about the financial aspect.

What made the Parish Council think we needed a multi million pound hall?

When were they going to tell the residents of Poundstock that their Parish

Council tax will drastically go up because they don't know that it is more cost effective and sensible to upgrade an existing building rather than buy land and build a brand new hall.

Sean Alison December 2024

Dear Editors

The proposal to build a new Parish Hall for Poundstock has caused confusion since 'the idea' was put to the Parish in 2022. This has culminated in misinformation and what appears to be opinions and decisions of the Parish Council to proceed with their preferred location and size without clear evidence, to support the reality of all the implications of building a hall. The parishioners require evidence of need, use, initial and future costs (land purchase, construction, planning, maintenance, operation and management of a new hall). Evidence, based on reality, not just ideals is required, before further decisions are made

Yours sincerely

The Ward Family December 2024

Cont overleaf

Proposed Parish Hall I comments cont.

Editors Note

In our article in the October / November edition, we reported in detail statements made by Stephen Blake, Chairman of the Parish Council at the consultation meeting in September. The Parish Council stated that if a Hall were not built, the money that has been ring fenced in the Community Hall Fund cannot be used for alternative purposes. They also confirmed that a medium sized hall is estimated to cost £900,000 and this will be funded from the Community Hall Fund and grant applications, the Parish Council will not borrow money to build the hall.

We asked the Parish Council about the Postcards that were sent out to all residents seeking their views. They confirmed that 94 cards were received, of these 55 were in favour of a Hall (58%).

15 had no view on the size (27%); 6 wanted a small hall (11%); 25 prefer a medium sized hall (45%) and 9 prefer a large hall (16%).

The Parish Council has decided to set up a Steering Group to consider the next steps, and are inviting local residents to get involved. Please see the article later in this edition on page 36.

If you have any further comments or suggestions, please contact the Parish Council directly. The Packet will not be publishing anything further on this topic until there are some concrete decisions.

An alert for all walkers

With the dark mornings and evenings, please be safe and wear hi-viz vests, jackets and/or belt/braces whilst walking or cycling.

This morning I nearly mowed down an innocent dog walker – the dog was dark coloured, the walker had a dark coat and against the dark hedge they were almost invisible.

Apart from the shock I had, I expect the pedestrian did as well!

Hi-viz clothing is easily available and could save your life, so be careful out there!



Rainbows

This little piece below is the Part 1 of 3. Part 2 will be about the romance and mythology behind rainbows, and will appear in the April / May issue and Part 3 in June / July; Part 3 is about the science behind a rainbow.

PART 1

When I was nineteen, I worked in the desert in Western Australia. We were a crew of three: 2 geologists and little me. We were prospecting for a mineral called rutile – Titanium Oxide. The idea was to find deposits large enough to mine. Pure titanium oxide is whiter than white and is used in paint, toothpaste and as a food colouring.

Our weekends in the desert were exciting despite there being a severe lack of cinemas or nightclubs.



One Saturday, at the start of the rainy season, when wild flowers started springing out of the desert sand, we spotted a rainbow. One of the geologists called Bruce (true I promise) said: -We'll set up the theodolite and pinpoint where the rainbow touches the ground.

We measured the precise point where the rainbow touched, and drove to the spot. The Land Rover had a trailer, and mounted on the trailer was a powerful drill. We set it up and drilled down. When we got to 120 feet, there was a rushing sound and, moments later there was a whoosh in the drillhole and we all got covered in a flood of brilliant white liquid.

Pieter – he was Norwegian – explained that it was Aluminium Silicate or China Clay. It was an Artesian Well which is why the white liquid was under pressure.

And that all goes to show that there is not a pot of gold at the end of a rainbow. But there may be a surprise.



Written by Christopher Asbury

YOUR LOCAL INSURANCE BROKER

**Offering A Whole Range Of Products
Including Business, Motor, Home,
Liability, Travel & More!**



CALL US TODAY - 01288 353999

Chapter House, Burn View, Bude (by Coop)

www.hodgsoninsurance.co.uk

www.guesthouseinsurance.co.uk

**We Search The Market So You
Don't Have To!**

**TRENCREEK FARM HOUSE
Tel 01840 230219**

Traditional farmhouse food for
traditional value

All food freshly prepared, home
cooked and served in an informal,
relaxed and unhurried atmosphere.

Bookings are essential with 24hrs
notice please

Richard and Margaret Heard

trencreekfarmhouse@outlook.com
EX23 0AY



QUINCEBOROUGH FARM SELF-CATERING COTTAGES

**PAT & ALASTAIR ROWLAND
WIDEMOUTH BAY BUDE
CORNWALL EX23 0NA**

01288 361236

WINTER LETS CAN BE ARRANGED
ALSO STORAGE & WORKSHOPS

Moore's Butchers Traditional Butchers

Established over 100 years
BEEF and LAMB produced on
our own farm

Local PORK, BACON and
FREE RANGE POULTRY

COOKED MEATS

**Free deliveries to Poundstock,
Widemouth Bay**

**Bude: 6 Queen Street
01288 355552**

Kilkhampton: 01288 321240



**Bodyspeak
Somatics**

Body Focused Therapy

Restoring the body as a place
of safety.

For more information
and to book a free 20 minute
consultation please visit
www.bodyspeaksonatics.com

Evelyn is a registered Somatic
Movement Therapist (RSMT)



Are you affected by
stress, chronic pain,
feeling overwhelmed?

Would you like to deepen
your awareness of the
body to feel more safe
and grounded?

Somatic Therapy works
with the body's response
to life experiences
through sensory
awareness, movement,
embodied dialogue,
and bodywork.



BR PLASTERING

PLASTERING - RENDERING - DRY LINING

07761 735022

brplasteringsw@gmail.com

Widemouth residents Christmas Lunch

The Widemouth Community came together to enjoy a meal at Black Rock Cafe. A big thanks for a delicious dinner and to the staff who looked after us so well.

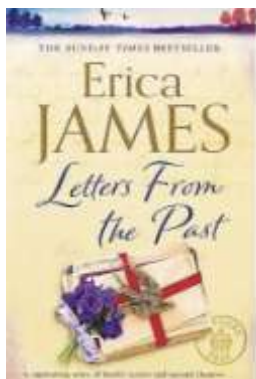
£100 was raised through a raffle – thank you to those who donated gifts. Money will go to Cornwall Air Ambulance. Thank you to Nicky and Rachel for organising and co-ordinating.



Wishing the community a happy and healthy New Year.

Written by Lynda Bolding

Book Review by Anne Marsh



Letters From the Past by Erica James.

This is a heart wrenching read that switches between 1944 wartime Suffolk and London to 1962. It scrutinises the Deveraux family; once an upper class group who thought themselves above everybody and everything, including the law.

Now with just one of those with old 'values' (although I use that word ironically really) remains and the storyline weaves tales of family challenges, close friendships and some of the turmoil of change that WW2 left in its wake for the family and us all in general.

Well written and good characters with Romily Deveraux being the one who keeps them all safe and principled.

Jubilee Club Trip

The Jubilee Club have organised a Coach Trip to THE HOUSE OF MARBLES in Bovey Tracey on Monday 10th March. Everyone is welcome to join us. The pick up is at Wainhouse Corner.



Please contact Diana 01840 261366 for more details.



**CORNISH COASTS
2025 LOCALS CARD**

**POP IN TO GET YOUR
NEW 2025 LOCALS CARD**

**ALSO 10% OFF HOLIDAYS
BOOKED FOR YOUR FRIENDS
AND FAMILY WITH CODE
'PACKET10' (EXPIRES 31/03/25)**



West Country Carpets

**1 – 2 Pethericks Mill Ind. Est.
(Opp. Rugby Club)**

**40 YEARS + SUPPLYING QUALITY
DOMESTIC AND CONTRACT
FLOOR COVERINGS**

**Call Jeremy on 01288 352912
info@westcountrycarpets.co.uk**

REMNANT WAREHOUSE

01288 355320

**CARPETS AND VINYL
ROLL-ENDS FACTORY
CLEARANCE**

MANY AT HALF-PRICE OR LESS



**DENISE WELLINGTON
FUNERAL SERVICES**

**COMPASSIONATE, CARING,
TRUSTED & PROFESSIONAL**

Memorials | Pre-Paid Funeral Plans

24 Hour Contact 01288 359277



**denisewellingtonfunerals.co.uk
enquiries@denisewellingtonfunerals.co.uk**

Local Contacts

NHS non-emergency helpline	111
Stratton Hospital Minor Injuries Unit (Hours vary according to staff availability. Please phone before attending.)	01288 287700
Doctors' surgeries:	
Neetside	01288 270580
Stratton	01288 352133
Boscastle	01840 250209
MP: Ben Maguire	ben.maguire.mp@parliament.uk
Parish council chair: Stephen Blake	- stephen.blake@poundstock-pc.gov.uk
Parish clerk: Lynn Pluess	0776 8100 560
Cornwall Councillor: Nicky Chopak	0781 030 2061
Cornwall Council	0300 1234 100
Bude Library	0300 1234 111
Library renewal line	0845 607 6119
Recycling centre/tip (Tiscott Wood)	0845 630 0300
Samaritans	116 123
National Childline	0800 1111
Police – non-emergency	101
Farming Community Network	0845 367 9990
Bude Food Bank	01288 448748
Citizens Advice (Phone advice line, operates 10–4, Monday–Friday)	03 444 111 444
CCS helpline/Age UK Cornwall	01872 266383
Floodline	0845 988 1188
Western Power (power cuts)	0800 678 3105
PCC Secretary, Poundstock: Liz Jones	079040 88779
Marhamchurch WI: Shirley Youldon	01288 354672
Poundstock Skittles: Pam Gilhespy	01288 361570
Poundstock Ringers	079040 88779
Juliotter Garden Club or 01840 261237	01566 781559
Rebel Cinema	01288 361442

Local Organisations

Libraries

Bude Library is currently open 10.00–5.00 Mondays, Wednesdays and Fridays, 10.00–1.00 Saturdays. Reserve books by phone (0300 1234 1111) or online at capitadiscovery.co.uk/cornwall/login.

Poundstock's two pop-up libraries, in St Winwaloe's and Our Lady and St Anne's, are available when the churches are open (all day, every day). A wide choice of books can be borrowed or bought, with all proceeds going to charity.

Poundstock Post Office

Still based in the old shop at Cornish Coasts Caravan and Camping Park on the A39. Open Mondays and Thursdays, 9.00–1.00 (ask at the main shop).

The following are accurate to the best of our knowledge, but check before you go (contact details below).

Scouts and Guides

Cubs: Monday 6.30–8.00 pm (01288 352786)

Scouts: Tuesday 6.30–8.00 pm (07842 084971)

Beavers: Wednesday 6.00–8.00 pm (07855 001284)

Rainbows (Tuesday 17.45) and Guides (Monday 19.00): ring Mary on 01840 230006. Brownies (Monday 17.45): ring Louise on 07817 985661.

Marhamchurch WI

Marhamchurch Methodist Hall, 7.30 pm, second Tuesday of the month (note change of time to afternoon).

Jacobstow WI

Jacobstow Parish Hall, 7.30 pm, second Thursday of the month.

Juliotter Garden Club

Otterham and St Juliot Hall, 7.30 pm, third Tuesday of the month.

Bude Bridge Club

Tuesday and Friday evenings, Wednesday afternoons, in the Parkhouse Centre. Details from www.bridgewebs.com/Bude or ring 01237 471111.

Poundstock Gildhouse

You can hire the Gildhouse for events from meetings to parties and wedding. Call 01288 341537 or visit www.poundstockgildhouse.co.uk.

Diary Dates

FEBRUARY

2nd 8.00—10.30pm Jazz Club. Falcon Hotel Bude
2nd 3.00pm DSQ Concert at Minstrels, Canworthy Water
7th 8.00pm 80's Mixtape evening. Parkhouse Community Centre
8th Bude Jive Club. Parkhouse Community Centre
14th Valentine's Day

MARCH

1st St David's Day
4th Shrove Tuesday
5th Ash Wednesday
5th St Pirran's Day
5th Shout & charity event with The Bencoolen Wreckers. Brendan Arms Bude.
15th Silent Disco. Parkhouse Community Centre

30th 11.00—3.00 Shoresearch Training Survey, Widemouth Bay
Come and join Cornwall Wildlife Trust to learn how to survey the shoreline to find many of the wonderful marine creatures we have along the Cornish coastline! This hands-on training will allow you to partake in the Shoresearch events and be part of the vital data collection needed to help preserve our coastline.

We will meet in the car park at Widemouth Beach, Bude at 11am. Please bring a drink and snack/packed lunch with you. You will need suitable shoes and clothing suitable for the ever-changing Cornish weather!

Any questions please email shoresearch@cornwallwildlifetrust.org.uk Please book tickets at <https://www.eventbrite.co.uk/e/shoresearch-training-bude-tickets-1203123989239> and ensure you read the guidelines online before getting tickets. It's not suitable for everybody.

REGULAR EVENTS

WI Week St Mary 19.15 2nd Thursday Monthly
Camelford Garden Club 14.30-16.30 1st Wednesday Monthly Library
Rainbows Tues 17.45-18.45, Brownies Mon 18.00-19.30, Guides Mon 19.00

Please remember the clocks go forward on 30th March at 1am

Poundstock Parish Council

www.poundstock-pc.gov.uk

<i>Chairman</i>	Stephen Blake	stephen.blake@poundstock-pc.gov.uk
<i>Vice-chair</i>	Michelle Carter	michelle.carter@poundstock-pc.gov.uk
<i>Councillors</i>	Max Faulkner	max.faulkner@poundstock-pc.gov.uk
	Steve Haynes	steve.haynes@poundstock-pc.gov.uk
	Eric Harris	eric.harris@poundstock-pc.gov.uk
	Pamela Idelson	pamela.idelson@poundstock-pc.gov.uk
	Tom O'Sullivan	tom.osullivan@poundstock-pc.gov.uk
	Graeme Swatton	graeme.swatton@poundstock-pc.gov.uk
<i>Parish clerk</i>	Lynn Pluess	clerk@poundstock-pc.gov.uk 07768 100 560

For details of how to apply to be co-opted to the Parish Council, please see the website or contact the Clerk

The parish council website carries agendas, full minutes and other documents, as well as information about the Neighbourhood Development Plan and the parish



Poundstock Neighbourhood Plan Committee

Chairman: Matthew Blows

Secretary: Lyn Smith

Members: Sara Beckett, Councillor Stephen Blake, Barry Rogers, Phyllis Ward, Rachel Roberts, Councillor Michelle Carter, Councillor Steve Haynes and Councillor John Worth.

Contact: email: ndp-sg@poundstock-pc.gov.uk or by post to:
St Marwenne, Combe Lane, Widemouth Bay, EX23 0AA

Hire of the Gil dhouse

You probably know that Poundstock Gildhouse is around 475 years old and has been used in the Parish as a meeting place for most of this time. It underwent significant restoration in the early 2000's, fully completed by 2007.

You may not know that the Gildhouse is available for hire, and is the perfect setting for parties, talks and meetings. The building consists of an upstairs feasting hall with fully fitted kitchen, and a slightly smaller room on the lower level. Both floors have disabled access and toilet facilities. The kitchen includes crockery and utensils for up to 30 persons. If the sale of alcohol is intended the Hirer is responsible for obtaining a licence. There is also a small marquee available for hire at a cost of £35 plus £50 for the use of the churchyard.

If you are interested in bookings please contact bookings@poundstockgildhouse.co.uk or visit www.poundstockgildhouse.co.uk to print or download a booking form.



Hire Charges			
Sessions	Feasting Hall	Downstairs Rooms	Whole Building
Morning 09.00 - 13.00	£30	£20	£50
Afternoon 13.30 - 17.30	£30	£20	£50
Evening 18.00 - 23.30	£35	£25	£60

Recycling Ghost Fishing Nets

A couple of weeks ago Behaviour Change were joined by Widemouth Task Force who helped remove 146kg of ghost gear which had washed up on Wanson Beach.

The recovered gear was bundled into the Waterhaul van and taken to their Cornwall based re-cycling unit to be cleaned and processed, ready for our next batch of products.

See our website for some of our re-cycled products.

www.behaviourchangecornwall.co.uk/product-category/recycled-homeware





**Installation, servicing,
Repairs, surveys
Gas safety
certificates,
Energy efficiency
Upgrades
Oil, gas & renewables**



WRAS

**GENUINE
24HR
CALL OUT**

FREE QUOTATIONS

T: 07557 872 662

Made to Measure Blinds and Curtains

Competitive prices and fitting included.

Choose from a full range of Hillarys' fabrics
and a large variety of styles, including
Venetian, Roman and Verticals.

Contact David Fawcett to arrange a home visit:

07925539357

david.fawcett08@gmail.com

Or find me on Facebook at David Fawcett.

Tintagel Skip Hire Ltd Waste Management

Trebarwith Road, Delabole PL33 9DE

Telephone: 01840 770 449

- ❖ Skip Hire
- ❖ Wheelie Bin Hire
- ❖ Waste Management
- ❖ Waste Collection Service
- ❖ Cardboard And Glass Collections
- ❖ Grab Hire

PAUL FINN solicitors

*Always available
for you.*

*Always ready
to help.*

Our clients
consistently rate
our services as
"excellent" - come
and see why.

Bude: 01288 356 256

The Strand Bude Cornwall EX23 8SY
www.FinnLaw.co.uk

Holsworthy: 01409 255 446

20 The Square Holsworthy Devon EX22 6AN
Enquiry@FinnLaw.co.uk



THE CABIN

CRACKINGTON HAVEN,
BUDE,
CORNWALL EX23 0JG
TEL: 01840 230238

BEACH CAFÉ & SURF EQUIPMENT-HIRE & SALES



BRIGHT JOINERY

Fine carpentry
Architectural joinery
Bespoke furniture

07813 545 774

info@brightjoinery.co.uk
www.brightjoinery.co.uk

Bude, Cornwall



**LIFE DRAWING
CLASS**

Every **WEDNESDAY**
10-12.30pm
at **CRACKINGTON INSTITUTE**
07836 315367 for more info

Space for sand

In previous issues, we have highlighted the work done by the Widemouth Task Force, Space for Sand. The group is made up of interested people worried about the dunes, climate change, wildlife and various flooding issues.

One of the results of these meetings, has been the “Gladeing” and paths being created in amongst the scrub bushes at the back of Widemouth and Black Rock.

An amazing remote controlled machine munched through the scrub leaving a residue of mulched undergrowth in the pathways and glades. Then a small bushwhacker cut the edges at an angle and finally a couple of guys with brush cutters then roughened the edges to make it look more natural.



This means that the pathways can be kept tidy once grass has grown and visitors can picnic in the glades. Natural fauna and flora will be able to flourish where just barren scrub had existed before.

See page 33 for more information about the Space for Sand project.



O&R



Quality potatoes

Tired of lugging heavy potatoes home from the shops?
Why not have them delivered to your door - hassle free.
2.5kg up to 25kg bags available.
Guaranteed regular, reliable service

Email : healqualitypotatoes@gmail.com

Phone Olly 07876 708617 Roxy 07377324550
or find us on facebook





BUDE EYE CENTRE
QUALITY . VALUE . COURTESY . SERVICE

YOUR MODERN INDEPENDENT OPTOMETRIC PRACTICE

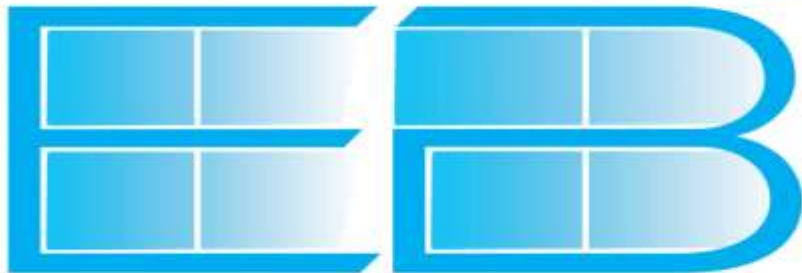
Bude Eye Centre, established in 2005, are equipped with up to date equipment, a wide selection of eyewear and latest contact lenses to suit individual needs. We offer same day service and also hearing aid services.



WE OFFER:

- ✓ NHS & Private Eye examinations
- ✓ Contact lens specialist
- ✓ 3D-OCT Screening available
- ✓ Free children's eye care
- ✓ Regular hearing service, including free assessments
- ✓ Honest and expert advice on frame selection
- ✓ Wheelchair friendly practice

Bude Eye Centre, 7 Queen Street, Bude, Cornwall EX23 8AY
01288 350041 | info@budeeyecentre.co.uk | budeeyecentre.co.uk



WINDOW CLEANING

PURIFIED WATER FED POLE SYSTEM

Ed Bragg - North Cornwall

e.bragg@hotmail.co.uk 07535 938140

The night sky in February & March

In February, the sun will be setting at about 1730 at the middle of the month, leaving Venus and Saturn to dominate the western sky. Saturn will set about 1900, while Venus will be brilliant until she sets at 2100. Meanwhile, Jupiter will be the next brightest object in the southern sky from Sunset until it sets in the west at about 0200, followed by Mars at about 0600. Orion and Taurus continue to be among the most recognisable constellations of the winter sky, and are fascinating to sweep with binoculars.

In March, Venus will be setting shortly after Sunset, but Jupiter and Mars will be setting much later, both will be prominent in the southern sky for much of the night.

NASA's team operating the Parker Solar Probe have confirmed that it survived its scorching journey through the Sun's Corona, at 430,000 mph, having received a signal from its beacon transmitter that it is operating normally and able to transmit scientific details of its encounter.

Two for two! A duo of interacting galaxies commemorates the second science anniversary of NASA's James Webb Space Telescope, which takes constant observations, including images and highly detailed data known as spectra. Its operations have led to a "parade" of discoveries by astronomers around the world..In just two years, Webb has transformed our view of the universe, is providing insights into longstanding mysteries about the early universe and ushering in a new era of studying distant worlds.

The telescope's specialisation in capturing infrared light — which is beyond what our own eyes can detect — shows these galaxies, collectively known as Arp 142, locked in a slow cosmic dance. Webb's observations, which combine near- and mid-infrared light from Webb's NIRCam (Near-Infrared Camera) and MIRI (Mid-Infrared Instrument), respectively, clearly show that they are joined by a haze represented in blue that is a mix of stars and gas, a result of their mingling.

Their ongoing interaction was set in motion between 25 and 75 million years ago, when the Penguin (individually catalogued as NGC 2936) and the Egg (NGC 2937) completed their first pass. They will go on to shimmy and sway, completing several additional loops before merging into a single galaxy hundreds of millions of years from now.

Visit the NASA James Webb web site and enjoy the fabulous images it contains. You can find it at <https://webbtelescope.org>

Written by Bill Turnill

P&B Interior Design

Ready made curtains, voiles,
nets & cushions
Curtain tracks, poles and tie backs
all in stock

Huge selection of roller
& Venetian blinds
Suppliers of Velux blinds
Custom made curtain & blind
service available
Farrow and Ball paint
DMC threads and kits
Haberdashery & accessories
Gifts for all occasions

2 Lansdown Mews
Lansdown Road, Bude
01288 356303

Pilates Classes In North Cornwall

Week St Mary, Canworthy Water,
Warbstow, Higher Crackington
Launceston, Bodmin, St Kew

What does Pilates do?

- Targets the deep core stabilising muscles
- Improves muscle tone, strength & joint mobility
- Improves posture, alignment & body awareness
- Corrects muscle imbalances & encourages pain-free movement
- Classes are progressive and operate on a school term basis.
- Classes limited to 12 people
- Fully qualified level three teacher

BODY CONTROL
PILATES

Martin Brooks 07812 959 879
www.northcornwallpilates.co.uk
martin@northcornwallpilates.co.uk

Your friendly local plumber...



All aspects of
plumbing and heating
undertaken

Email: plumbheatrenew@gmail.com

Phone: 07947354954/01840 230558

Bangors Organic Veg Boxes

GROWING LOCAL,
CLIMATE-FRIENDLY
FOOD SINCE 2001

PAUSE, CANCEL
AND RESTART
YOUR BOX AT
ANY TIME

LOCAL DELIVERY
IN OUR ZERO
EMISSION
ELECTRIC VAN

ALL PRODUCTS ARE
CERTIFIED ORGANIC

www.ooboby.org/north-cornwall
01288 361 297 | 07792 108 541 | info@bangorsorganic.co.uk



The Packet Needs You!

Contact poundstockpacket@gmail.com

Are you good with
Microsoft Publisher?

Can you proofread?

Are you good with
social media?

Do you like
taking
photographs?

We need young
people to help
with a new
regular page

Do you have an
event you'd like
us to know about?

Can you write about ...

Local history

Favourite recipes

Surfing / sports

Local music

Wildlife and gardening

Local walks

Could you be
our new
Minute
taker?

Are you good at
turning basic
information into
a readable
article?



- Personal training
- Nutrition & lifestyle coaching
- Body transformations
- Programs, challenges & memberships

RORY HODGES

Body & Behaviour
Change Expert

Get Started Here!



More Information At
www.roryhodgescoaching.com
Or On Social Media



A WALK TO ST NECTAN'S GLEN

The family came to stay so, as it was windy and had been raining heavily for several days, I thought St Nectan's Glen would be an experience.

We caught the 95 bus and bypassed having to pay to park.

The walk up the valley was stunning with trees just beginning to turn. The stream churning it's way beside the track.

At the head of valley there were toilets, unfortunately these days you have to pay for the privilege of seeing the waterfall. For the money there is a cafe, nature trail and walk through woodland as well.

We clambered down steps cut into the rock and as I hoped the water was pouring out of the "bowls" into the "holy" place. All around people had tied bunting and stuff to the trees.

We took the alternative route back and stopped at the cute little church.



Sand Replacement—Widemouth Task Force

Widemouth Task Force and the Making Space for Sand project have collaborated with the owners of Black Rock Beach to help with sand management on their carpark.

During storms, the car park can suffer from being covered in tonnes of windblown sand. This happens several times a year and needs to be cleared to keep the car park and surrounding area safe. There was some local concern that the sand may be considered contaminated and, as such, a reticence to put it back on the beach.

In response to this WTF have worked alongside MS4S project and sought advice from the Environment Agency who have indicated that only a very small amount of sand comes into contact with the ground and risks becoming contaminated. The majority of it sits above this level and is typically very fine, clean windblown sand. The EA have advised that this clean sand can be put back on the beach..

Putting the clean windblown sand back onto the beach ensures that the beach remains stable and the dunes remain healthy. In time, some of the sand may well blow back, but it will also move elsewhere along the beach and dunes, depending on longshore drift, wind, waves and tides.

Excerpts from Parish Council minutes

Poundstock Parish Council – Summary of Ordinary Meeting Minutes

16 October 2024

Matters raised by members of the public:

A member of the public raised the issue of flooding on the coast road. This will be reported to Highways. Another resident enquired about overgrown hedges at Millook, the Chair responded that the landowner is trimming them.

Planning Matters:

Resolved – No objections:

Bingera Cottage – Maderia Drive. Discharge of conditions relating to outline approval for the development of up to four dwellings

Langford Park, Marhamchurch. Prior notification of agricultural development North East of Penfound Farm. Change of use to residential and construction of attached garage.

Proposed new hall – next steps

The architect has recommended submitting a full planning application which will save money in the long run. The leaflets encouraging parishioners to join the steering committee have been printed.

Widemouth Toilets

It was resolved to: proceed with the installation of a urinal at child's height; charge the RNLi for water usage; accept the quote for winter cleaning and install a daily cleaning log in each toilet.

6 November 2024

Planning Matters

Land North of Crowshire, Poundstock. Resolved: Objections with comments: Overdevelopment and lack of amenity space; inadequate storage and waste collection; light and noise pollution; loss of biodiversity; highways concerns.

New Hall for Poundstock

The leaflets requesting residents form a steering group have been distributed. Draft terms of reference will be circulated at the next meeting.

Hedgehog Highways

Unanimously resolved to promote the distribution of Hedgehog Highways

Speed Gateways Marine Drive, Widemouth

Unanimously resolved to support.

20 November 2024

Planning Matters

Land East of 1 The Mallows. Resolved to object as per previous refusal.

New Hall for Poundstock

Resolved that Wheal Grey be commissioned to conduct the Ecology Report. The terms of reference for the Steering Group will be deferred.

Widemouth Bay toilets

Noted that during installation of new sinks, underground drainage issues were identified, emergency repairs had to be carried out.

Parish Council minutes—Cont.

Chairs Report

Cllr Blake noted that he attended a Cornwall Council budget meeting which highlighted significant challenges and potential service cuts.

Cllr Blake reflected on the Remembrance Service at the War Memorial and extended special thanks to Cllr Eric Harris for cleaning the area.

Police Advocate Cllr Graeme Swatton reported on new initiatives to improve road safety including new unmarked camera vans.

4 December 2024

Matters raised by members of the public:

A member of the public raised concerns about possible construction of chalets in Millook Area.

Planning Matters

Extension to existing building West Park, Leverlake Road, Widemouth.

Resolved No objection.

New Hall for Poundstock

The architects are making good progress with the plans. Resolved to defer the Steering Group's Terms of Reference to the next meeting.

Cllr Nicky Chopak Report

Regarding banking services, the community banking hub will likely be located in the Parkhouse Centre, Bude.

The work to widen the temporary rear entrance to Whalesborough is causing extra HGV traffic.

Cllr Chopak is following up with Highways to have the road markings reinstated at Treskinnick Cross and a new signpost made. She is working on having a large bin installed at Meadowlands layby.

Neighbourhood Draft Plan

This is pending completion of new maps then be submitted to Cornwall Council.

18 December 2024

Matters raised by members of the public:

A resident addressed the council regarding proposals to renovate a barn.

Planning Matters

Land North of Atlantic View, Two dwellings. Resolved No objection

Proposed new hall

The terms of reference for the Steering Group were adopted and will be uploaded to the website.

Widemouth Toilets

It was noted that the ladies toilet had been severely damaged by someone throwing a rock. Sincere gratitude to a Bude based plumber who carried out the repairs free of charge.

Litter and dog bin Meadowlands

Quotes for various sizes of bins were received. Following discussions it was resolved not to proceed with this project.

For further details please see the Parish Council website

Parish Hall I Steering Group

Would you like to be part of the Steering Group for the new Poundstock Parish Hall?

Poundstock Parish Council are now seeking residents of the Parish to volunteer to join a new Steering Group to work with the Council to decide the way forward for this exciting project.

Your Parish Council has listened to the opinions expressed at our public event last September as well as the feedback from the voting cards many of you kindly sent back.

Consequently, the Parish Council has unanimously agreed that the best way forward is to set up a Steering Group to ensure the dialogue with Parishioners continues which will help the Council to understand the views and aspirations of our community.

We want to make it clear that this project will only proceed with the support of a majority of parishioners. We value all opinions and encourage community engagement to ensure that all decisions are made in an honest and transparent manner.

If you are willing to put your name forward, please email our Clerk, Lynn, at clerk@poundstock-pc.gov.uk or call her on 07768 100560. Alternatively, you can write to Lynn at: Poundstock Parish Council, Trevoulter Barton, Poundstock, Bude, EX23 0DH.

All applications will be treated in the strictest confidence. When applying it would be helpful to tell us a little about yourself and why you would like to join.

Finally, at the last Council meeting the Terms of Reference for the Hall Steering Group were agreed and these are available on the council website (under "Policies"). If you would like to receive a copy please just email Lynn at the above address.

Written by Stephen Blake, Chair, Poundstock Parish Council



NeateFeet

-  Paddings & dressings
-  Verrucae treatment
-  Diabetic footcare
-  Toenail clipping
-  Ingrowing toenails
-  Painful corns removed
-  Painful callus reduction

We are a husband and wife team offering mobile foot treatment in the North Cornwall area. We provide professional footcare in the comfort of your own home.

Established in 2009, we have had many satisfied clients from over a decade of providing a dedicated and committed service.

Simon Neate, *DIP FHP* 07870 508 867
 Claire Neate, *DIP FHP* 07968 232 344



R-WALL

Building Future Partners

The Future of building

- ✓ Build Energy Efficient, Low Carbon Footprint, Eco friendly Homes with a lifespan in excess of 100 years
- ✓ Produce healthier, more comfortable living environments with exceptional Sound Attenuation, Air Tightness, Thermal Mass with Highest achievable fire ratings
- ✓ Build stronger structures unsusceptible to rot, infestation & capable of withstanding up to 250 mph winds
- ✓ A fast lightweight easy to construct build system, which can be built in all weathers
- ✓ Accepted by major warranty providers. Fully BBA tested & approved. Comprehensive onsite training & support provided



R-WALL can build:

- Residential buildings
- Industrial
- Retaining Walls
- Curves
- Pools
- Basements



Build Better! Build R-Wall!
www.r-wall.co.uk info@r-wall.co.uk

Bude: 01288 377337




Handmade, personalised cards
 So special, you'll never take them down

www.morcards.co.uk
morcardsbyvania.etsy.com



FREE ADVERTISING FOR LOCAL EVENTS

The Packet will always advertise local community and charity events free of charge. But we don't 'just know' what's happening – you have to tell us! Our deadline for the next edition is 15th March —contact Tania or Jayne at poundstockpacket@gmail.com

Defibrillators in the parish

Black Rock Cafe has a new defibrillator! It is positioned on the side of the car park hut as you drive through into the car park.

Widemouth Bay: next to the Summerhouse (by the church, Leverlake Road); near the top of Long Park Drive by the entrance to Pencarra and Bellair, just below the junction with Edith Walk; at the back of the public toilets just above Widemouth beach. The RNLI lifeguards also have a defibrillator, available at their hut above the beach when they are on duty.

Treskinnick Cross: just off the A39, in the old phone box.

DB
WALLING



Cornish Stone
Wall Specialists

- Dry stone wall repairs
- Retaining dry stone walls
- Stone work with mortared joints
- Earth stone hedging
- Landscaping
- General construction & ground works
- Garden features

FREE QUOTES

Call Dan on

07968 996191



www.dbwalling.co.uk

WALLING | LANDSCAPING | CONSTRUCTION

LISTED IN THE TOP 20 BEACHSIDE BARS & RESTAURANTS IN THE UK (THE TIMES)



BEACH HOUSE

WIDEMOUTH BAY, BUDE

HOME OF THE BREAK BAR

NORTH CORNWALL'S SECRET HIDEAWAY

SEAFOOD, SOUL FOOD, SUNSETS
CHARGRILLED STEAKS & SKEWERS

BEACH BAR & COCKTAIL LOUNGE

LET THE SUNSHINE & GOOD TIMES ROLL



WWW.BEACHHOUSEWIDEMOUTH.CO.UK





READY MIXED CONCRETE

- Ready mixed concrete
- Liquid floor screeds
- Dry screed
- Sand & Aggregates

FAST

FRIENDLY

PROFESSIONAL

**FOR QUOTES, BOOKINGS OR FOR MORE
INFORMATION PLEASE CALL US ON
01288 362111 OPTION 2
OR EMAIL US AT
rmc@macplant-ltd.co.uk**

Mac Crete
Bridgerule Industrial Estate
Holsworthy
EX22 7EB

